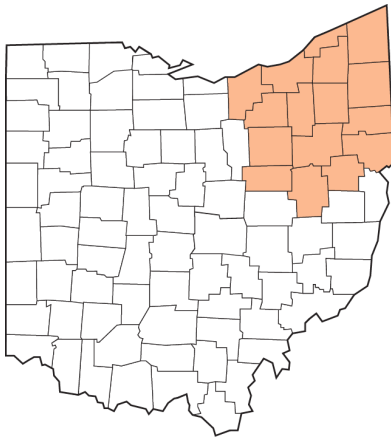


Ohio Workers' Compensation 2018 Snapshot

Mark J. Clendenin BS, MPA
NE Regional Business Development Manager



Regional Territory



Mark Clendenin
Regional Business Development Mgr.
Northeast Ohio
330-312-4713
Mark.Clendenin@ohiobwc.com

Mission Statement

To protect Ohio's workers and employers through the prevention, care and management of workplace injuries and illnesses at fair rates

BWC Updates

BWC is the Largest Exclusive State Fund in the U.S.

Total Active Employers FY17 = 242,474

State Fund Claims Filed in FY17

○ Lost Time	10,745
○ Medical Only	75,030
○ Occupational Disease	360
○ Death	155
○ Disallow or Dismissed	11,641
○ Total	97,931
○ Net Allowed Injuries	86,290

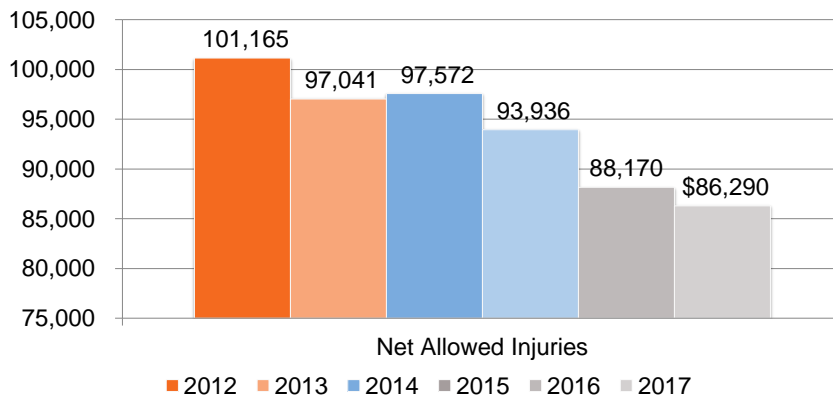
All Open Claims in FY17

○ Lost Time	242,778
○ Medical Only	461,978
○ Total	704,756

Total Benefits Paid = \$1.49 Billion

From BWC 2016-2017 Annual Report

Net Allowed Injuries

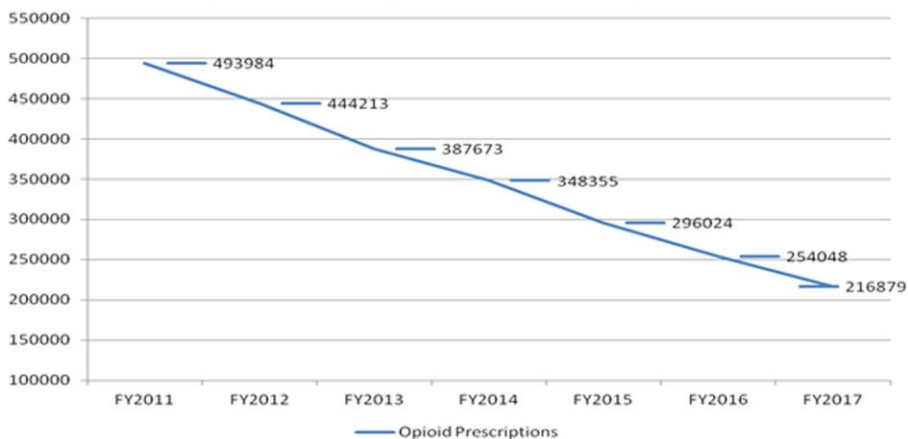


2017 Reduced Claims

- BWC approved 86,290 new claims in FY17, a decrease of 1,880 from FY16.
- Contributing reasons for this decrease include:
 - Continued safety funding;
 - Continued promotion of safe and healthy workplaces;
 - More employers putting safety education resources to work.

Pharmacy program

Opioid Prescriptions Covered By BWC



FY 2017 BWC Recap

- ✓ Private base rate reductions of 8.6%.
- ✓ \$1 billion rebate for Ohio's employers
- ✓ 2 year \$44 million wellness and safety commitment.
- ✓ Hosted 2nd Medical and Health Symposium.
- ✓ New BWC rule governing the prescribing of opioids

FY 2018 BWC Highlights

- ✓ \$1.5 Billion rebate to Ohio's Employers.
- ✓ Private base rate reductions of 8.8%.
- ✓ Public base rate reductions of 9%.
- ✓ Launched Better You Better Ohio wellness program
- ✓ Hosted our 3rd Medical and Health Symposium.

BWC Initiatives

Safety Campaign



Rebates to Employers

More than **A**
BILLION
 back again

Oregon WC Study



2016 Oregon Workers' Compensation Premium Rate Ranking Summary

Department of Consumer and Business Services

October 2016

- Ranking of states cost of WC
- <10 years ago - 3rd highest among all 50 states
- 2014 - 17th lowest among all 50 states
- 2016 - 11th lowest among all 50 states

2016 Oregon WC Study -least expensive

26	17	★	Pennsylvania	1.84	100%	April 1, 2015	108%
27	32		Georgia	1.80	98%	March 1, 2015	95%
28	14		Idaho	1.79	97%	January 1, 2016	109%
29	38		Mississippi	1.70	92%	March 1, 2015	85%
30	22		Tennessee	1.68	91%	March 1, 2015	105%
32	30		Nebraska	1.67	91%	February 1, 2015	96%
32	25		South Dakota	1.67	91%	July 1, 2015	100%
33	28		Florida	1.66	90%	January 1, 2016	98%
34	34	★	Michigan	1.57	85%	January 1, 2015	91%
35	41		Colorado	1.56	84%	January 1, 2016	81%
36	40	★	Kentucky	1.52	82%	October 1, 2015	82%
38	37		Arizona	1.50	82%	January 1, 2016	86%
38	35		Maryland	1.50	82%	January 1, 2016	88%
40	36		Texas	1.45	79%	July 1, 2015	87%
40	33		Ohio	1.45	79%	July 1, 2015	94%
41	39		Kansas	1.41	77%	January 1, 2016	83%
42	45		District of Columbia	1.37	74%	November 1, 2015	70%
43	46		Nevada	1.31	71%	March 1, 2015	68%
44	48		Massachusetts	1.29	70%	April 1, 2014	63%
45	43		OREGON	1.28	69%	January 1, 2016	74%
46	45		Utah	1.27	69%	December 1, 2015	71%
47	48		Virginia	1.24	67%	April 1, 2015	63%
48	43	★	West Virginia	1.22	66%	November 1, 2015	74%
49	49		Arkansas	1.06	57%	July 1, 2015	58%
50	50	★	Indiana	1.05	57%	January 1, 2016	57%
51	51		North Dakota	0.89	48%	July 1, 2015	47%

2016 Oregon WC Study -most expensive

1	1		California	3.24	176%	January 1, 2016	188%
2	3		New Jersey	2.92	158%	January 1, 2016	152%
3	4	★	New York	2.83	154%	October 1, 2015	148%
5	2		Connecticut	2.74	149%	January 1, 2016	155%
5	5		Alaska	2.74	149%	January 1, 2016	145%
6	9		Delaware	2.32	126%	December 1, 2015	125%
8	6		Oklahoma	2.23	121%	January 1, 2016	137%
8	7		Illinois	2.23	121%	January 1, 2015	127%
9	20		Rhode Island	2.20	119%	August 1, 2014	107%
10	10		Louisiana	2.11	115%	January 1, 2016	120%
11	11		Montana	2.10	114%	July 1, 2015	119%
12	23		Wisconsin	2.06	112%	October 1, 2015	104%
14	8		Vermont	2.02	110%	April 1, 2015	125%
14	13		Maine	2.02	110%	April 1, 2015	116%
15	17		Washington	1.97	107%	January 1, 2016	108%
17	27		Hawaii	1.96	107%	January 1, 2016	100%
17	12		New Hampshire	1.96	106%	January 1, 2016	118%
18	17		South Carolina	1.94	105%	September 1, 2015	108%
20	21		Missouri	1.92	104%	January 1, 2016	107%
20	20		New Mexico	1.92	104%	January 1, 2016	108%
22	20		Minnesota	1.91	104%	January 1, 2016	107%
22	27		North Carolina	1.91	103%	April 1, 2015	100%
23	31		Wyoming	1.87	101%	January 1, 2016	95%
24	24		Iowa	1.86	101%	January 1, 2016	101%
25	29		Alabama	1.85	100%	March 1, 2015	97%

Oregon Study-Surrounding States



	2016	2014
OHIO	40	33
MICHIGAN	34	34
INDIANA	50	50
KENTUCKY	36	40
WEST VIRGINIA	48	43
PENNSYLVANIA	26	17
NEW YORK*	03	04

Increased Commitment to Safety

- Safety Intervention Grants Program
- Workplace Wellness Grant Program
- Drug-Free Safety Program (DFSP) grants
- Transitional Work Grants
- In fiscal year 2017, BWC awarded grants totaling \$12,600,000 to 662 employers.



Program Eligibility

Targets two employee segments

- Employed by a company with less than 50 workers, in targeted industries
- Injured workers, by invitation

Targeted Industries

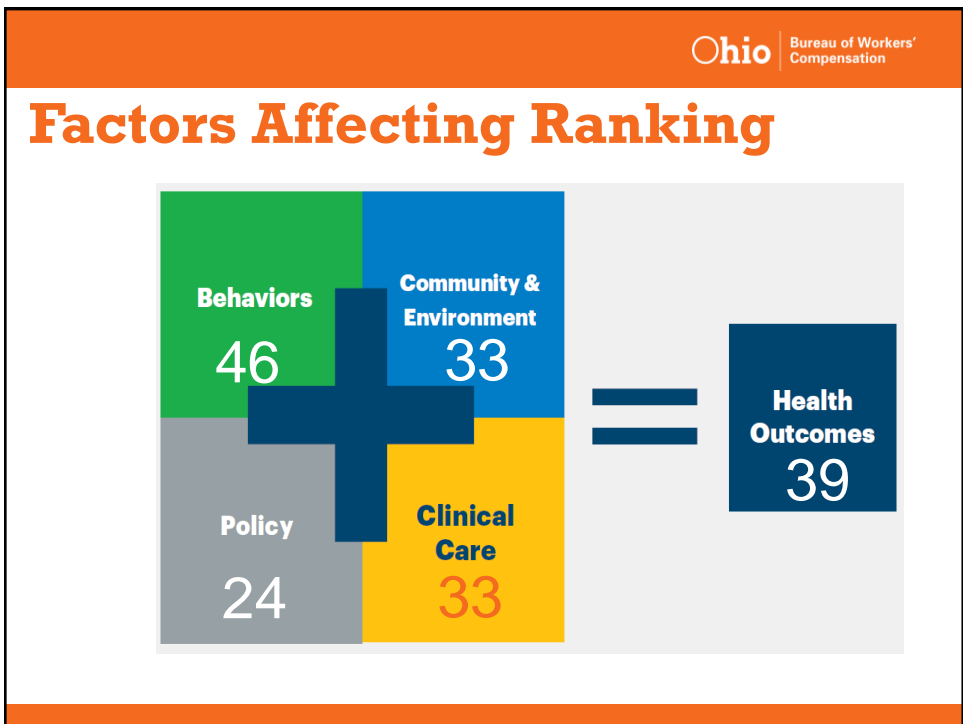
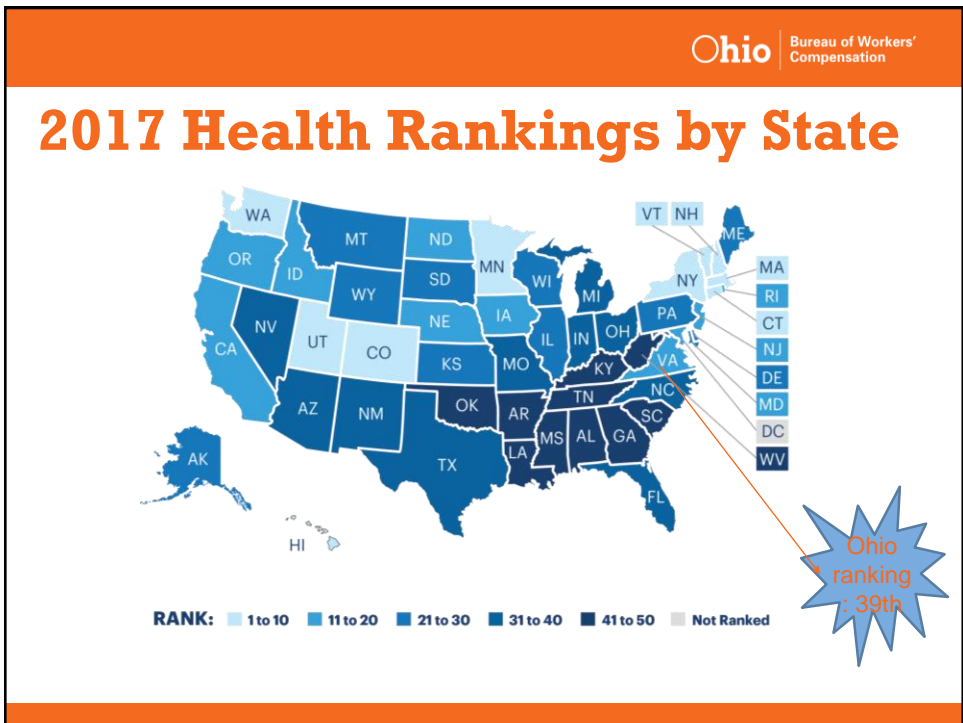
- Agriculture
- Automotive repair and service
- Construction
- Firefighters
- Health care
- Manufacturing
- Police and public safety
- Public employers
- Restaurant and food service
- Transportation and trucking
- Trash collection
- Wholesale and retail

Injured Worker

The injured worker will be invited to participate after collaboration with the employer, the managed care organization (MCO) and BWC.

Why Wellness?

- Prevent injuries because of improved workforce health
- Reduce the severity of an injury
- Increase the speed of recovery from an injury
- Improve return-to-work outcomes



Health Behaviors Ranking

Ohio overall behaviors ranking: 46th

Behavioral factor	Value	Rank
Obesity	31.5%	32
Excessive drinking	19.1%	30
Physical inactivity	25.9%	35
Smoking	22.5%	45
Drug deaths per 100,000 pop.	24.5	46
High school graduation	80.7%	34

Health Outcomes Ranking

Ohio overall outcome ranking: 39th

Health outcome	Value	Rank
Cancer deaths per 100,000 pop.	208.7	40
Cardiovascular deaths per 100,000 pop.	283.6	39
Diabetes	11.1%	31

Health Behavior Assessment and Intervention

- Provides standards and criteria governing reimbursement for health and behavior assessment and intervention (HBAI) services offered to injured workers who may benefit from an assessment that focuses on identifying behavioral barriers impeding the injured worker's recovery which may be addressed through intervention services.

29

New Fee Schedule Adopted

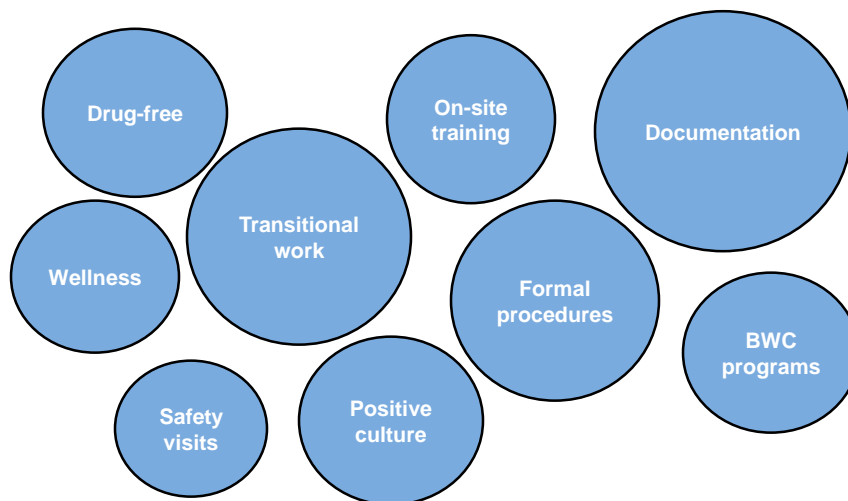
- Effective May 1, 2018
- Include hospital and ambulatory surgical centers
- Based on Medicare reimbursement rates
- Continued stability of fee reimbursements
- Current rates are just above the US median.

30

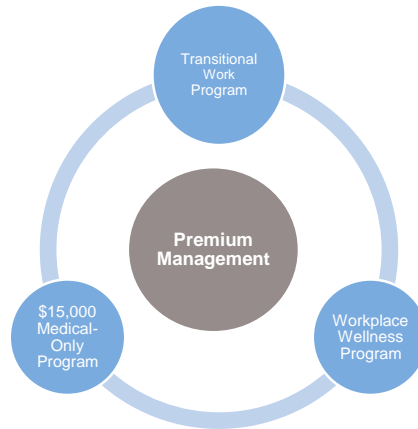
Strategies that Work

- Strategic approach
- Handicap reimbursement
- Subrogation
- Settlement

Strategic Approach



Program Interdependency



Handicap Reimbursement

- Substitute House Bill 27
- Effective July 1, 2017
- Amends handicap reimbursement 4123.343
- Incorporates lump-sum settlements

Handicap Reimbursement

- There are 26 allowed conditions.
- Discount based on relationship to injury:
 - Prolongs healing process;
 - Contributes to the injury.
- The percentage of discount is charged to the surplus fund.

Settlement

- A formal agreement needs to be completed before the experience period snapshot:
 - July 17 for private employers;
 - Feb 15 for public employers.
- Must allow 30 days for Industrial Commission of Ohio approval.
- Reserve drops to zero.

Subrogation

- The right to recover benefits from a third party because of negligence
- How recoveries are credited
- Injured worker must file suit against third party

HB 207 Subrogation Law

- HB 207 – Effective at BWC July 1, 2017
- To allow a state fund employer to have a workers' compensation claim that is likely to be subrogated by a third party paid from the surplus fund account in the state insurance fund rather than charged to the employer's experience

HB 207 Subrogation

- Notification and Update
 - Eligibility
 - Motor Vehicle Accident
 - Citation
 - Third Party Insurance
 - 180 Day for BWC Determination
 - Comparable Liability

AC-28 Request to Charge Surplus Fund-Auto

Request to Charge the Surplus Fund for Non-At-Fault Motor Vehicle Accident

Instructions

This application details the required documentation a private employer or public employer taxing district must provide to support a request for experience modification calculation. Submitting the required documentation with this form will help BWC make a quicker decision. BWC will advise you if it needs additional documentation or information.

- Fax this completed form and required supporting evidence to 614-621-1217, or submit it by mail to BWC, 30 West Spring St., Attn: Rate Adjustment Department 25th floor, Columbus, OH 43215-2256.
- You may email questions concerning the motor vehicle experience adjustments to emprateadj@bwc.state.oh.us.

AC-28 Request to Charge Surplus Fund-Auto

Responsible third-party information				
Name				
Address			Telephone number	
City	State	ZIP code	Email address	
Required supporting documentation that you must submit with this application includes: <ul style="list-style-type: none"> • Copy of the police motor vehicle accident report from a law enforcement agency; • Copy of the citation showing the third party is responsible for this accident. 				

Important

Questions?

